

Caller Interfaces (IMS-PSTN(ISUP) Call; Megaco/H.248 Signaling; IMS Caller Initiated Call Release)			
Calling UE	IMS Core Network	PSTN Interface	EventStudio System Designer 6
Caller User Equipment	Visited IMS	Media	
Caller	Orig P-CSCF	IM-MGW	24-Feb-13 15:23 (Page 1)

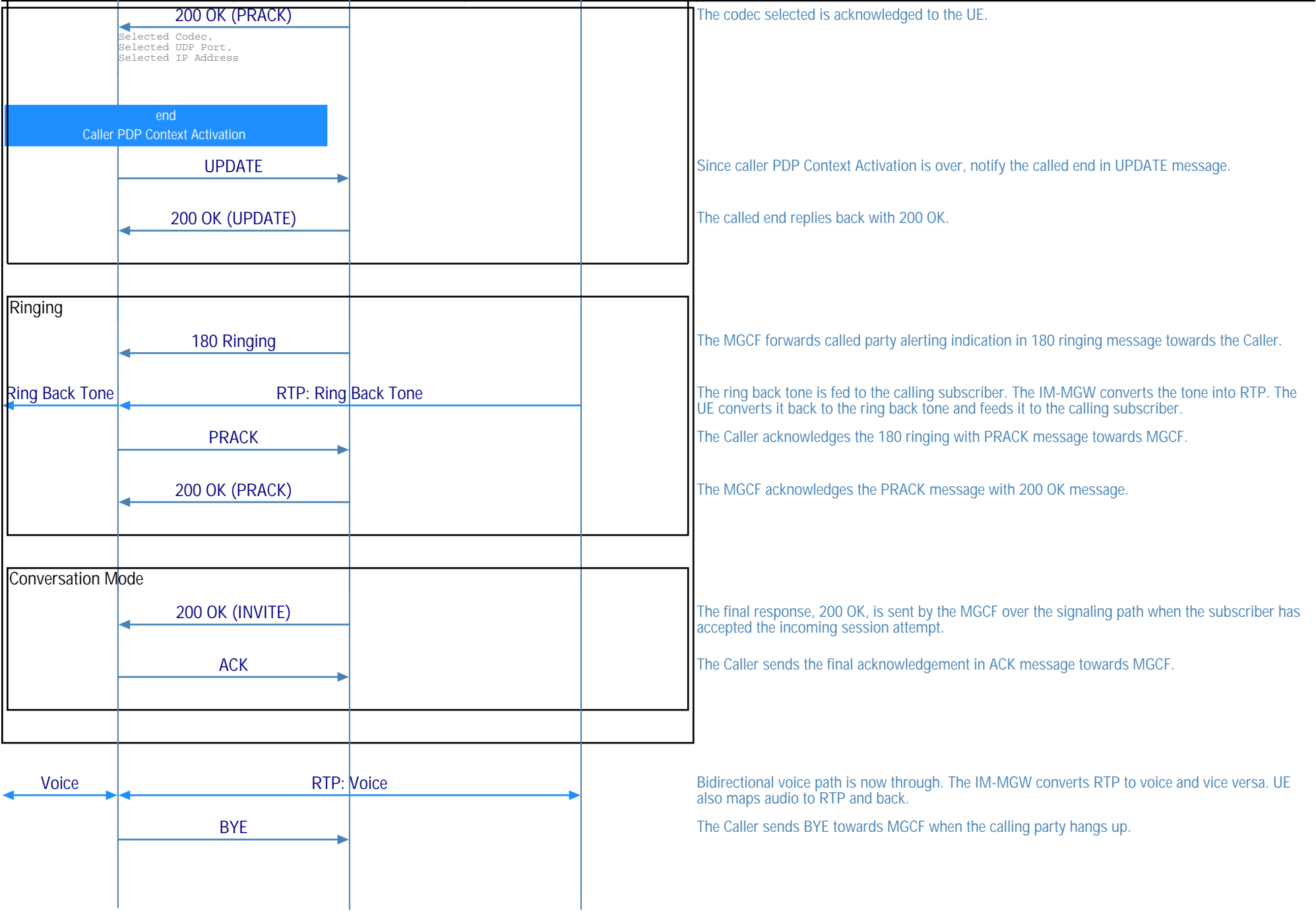
This call flow describes the call setup from one IMS subscriber to ISUP PSTN termination. The call is routed via the BGCF (Border Gateway Control Function) to the MGCF (Media Gateway Control Function). The MGCF uses one context with two terminations in IM-MGW (Media Gateway). The termination RTP1 is used towards IMS Core network subsystem entity and the bearer termination TDM1 is used for bearer towards PSTN CS network element.

This sequence diagram was generated with EventStudio System Designer (<http://www.EventHelix.com/EventStudio>).



Caller Interfaces (IMS-PSTN(ISUP) Call; Megaco/H.248 Signaling; IMS Caller Initiated Call Release)

Calling UE	IMS Core Network	PSTN Interface	EventStudio System Designer 6 24-Feb-13 15:23 (Page 2)
Caller User Equipment	Visited IMS	Media	
Caller	Orig P-CSCF	IM-MGW	



The codec selected is acknowledged to the UE.

Since caller PDP Context Activation is over, notify the called end in UPDATE message.

The called end replies back with 200 OK.

The MGCF forwards called party alerting indication in 180 ringing message towards the Caller.

The ring back tone is fed to the calling subscriber. The IM-MGW converts the tone into RTP. The UE converts it back to the ring back tone and feeds it to the calling subscriber.

The Caller acknowledges the 180 ringing with PRACK message towards MGCF.

The MGCF acknowledges the PRACK message with 200 OK message.

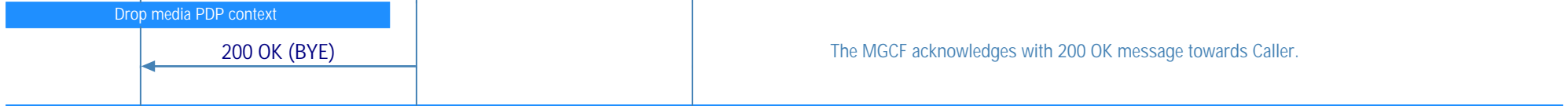
The final response, 200 OK, is sent by the MGCF over the signaling path when the subscriber has accepted the incoming session attempt.

The Caller sends the final acknowledgement in ACK message towards MGCF.

Bidirectional voice path is now through. The IM-MGW converts RTP to voice and vice versa. UE also maps audio to RTP and back.

The Caller sends BYE towards MGCF when the calling party hangs up.

Caller Interfaces (IMS-PSTN(ISUP) Call; Megaco/H.248 Signaling; IMS Caller Initiated Call Release)			
Calling UE	IMS Core Network	PSTN Interface	EventStudio System Designer 6
Caller User Equipment	Visited IMS	Media	
Caller	Orig P-CSCF	IM-MGW	24-Feb-13 15:23 (Page 3)



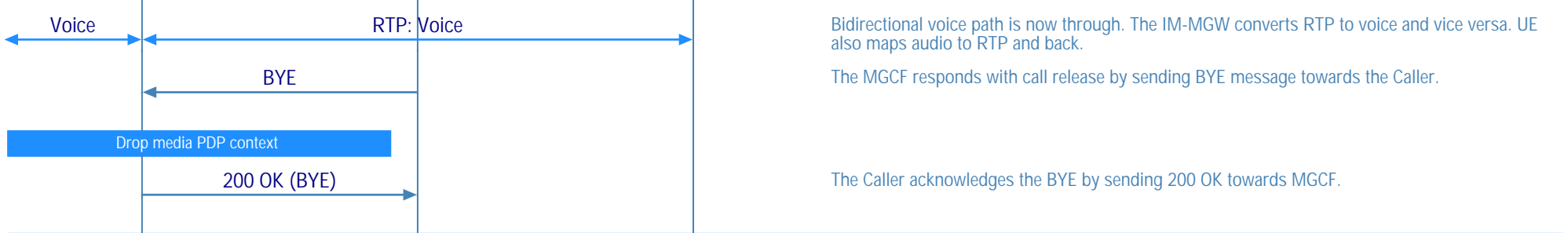
This sequence diagram was generated with EventStudio System Designer (<http://www.EventHelix.com/EventStudio>).

Caller Interfaces (Called PSTN Subscriber Initiates Release)			
Calling UE	IMS Core Network	PSTN Interface	EventStudio System Designer 6
Caller User Equipment	Visited IMS	Media	
Caller	Orig P-CSCF	IM-MGW	24-Feb-13 15:23 (Page 4)

This call flow describes the call setup from one IMS subscriber to ISUP PSTN termination. The call is routed via the BGCF (Border Gateway Control Function) to the MGCF (Media Gateway Control Function). The MGCF uses one context with two terminations in IM-MGW (Media Gateway). The termination RTP1 is used towards IMS Core network subsystem entity and the bearer termination TDM1 is used for bearer towards PSTN CS network element.

This sequence diagram was generated with EventStudio System Designer (<http://www.EventHelix.com/EventStudio>).

IMS to PSTN(ISUP) call setup



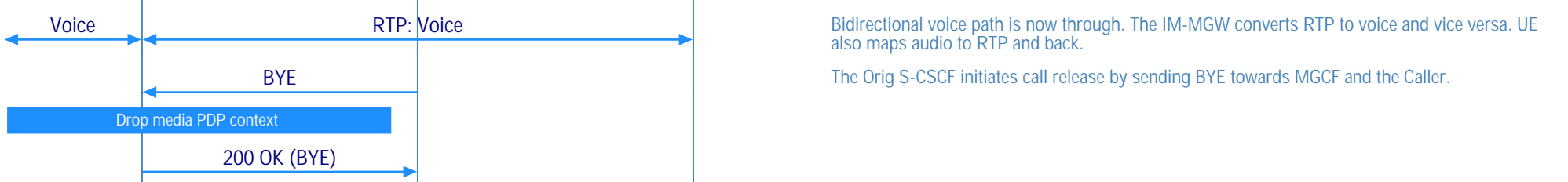
This sequence diagram was generated with EventStudio System Designer (<http://www.EventHelix.com/EventStudio>).

Caller Interfaces (IMS Network Initiates Call Release)			
Calling UE	IMS Core Network	PSTN Interface	EventStudio System Designer 6
Caller User Equipment	Visited IMS	Media	
Caller	Orig P-CSCF	IM-MGW	24-Feb-13 15:23 (Page 5)

This call flow describes the call setup from one IMS subscriber to ISUP PSTN termination. The call is routed via the BGCF (Border Gateway Control Function) to the MGCF (Media Gateway Control Function). The MGCF uses one context with two terminations in IM-MGW (Media Gateway). The termination RTP1 is used towards IMS Core network subsystem entity and the bearer termination TDM1 is used for bearer towards PSTN CS network element.

This sequence diagram was generated with EventStudio System Designer (<http://www.EventHelix.com/EventStudio>).

IMS to PSTN(ISUP) call setup



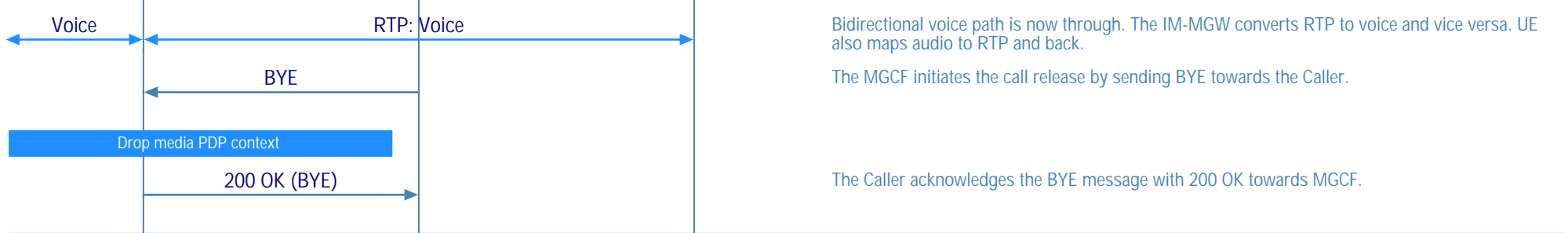
This sequence diagram was generated with EventStudio System Designer (<http://www.EventHelix.com/EventStudio>).

Caller Interfaces (MGCF Initiated Call Release)			
Calling UE	IMS Core Network	PSTN Interface	EventStudio System Designer 6
Caller User Equipment	Visited IMS	Media	
Caller	Orig P-CSCF	IM-MGW	24-Feb-13 15:23 (Page 6)

This call flow describes the call setup from one IMS subscriber to ISUP PSTN termination. The call is routed via the BGCF (Border Gateway Control Function) to the MGCF (Media Gateway Control Function). The MGCF uses one context with two terminations in IM-MGW (Media Gateway). The termination RTP1 is used towards IMS Core network subsystem entity and the bearer termination TDM1 is used for bearer towards PSTN CS network element.

This sequence diagram was generated with EventStudio System Designer (<http://www.EventHelix.com/EventStudio>).

IMS to PSTN(ISUP) call setup



This sequence diagram was generated with EventStudio System Designer (<http://www.EventHelix.com/EventStudio>).