

Mobile Interfaces (GSM Originating Call)					
Cell		Mobile Network		Fixed Network	EventStudio System Designer 4.0 13-Sep-08 21:38 (Page 1)
Mobile Station		Base Stations	NSS	PSTN	
User	Mobile	BSS	MSC VLR	PSTN	

LEG: GSM Mobile Originated Call

This sequence diagram was generated with EventStudio System Designer 4.0 (<http://www.EventHelix.com/EventStudio>). Copyright © 2008 EventHelix.com Inc. All Rights Reserved. The EventStudio source files for this document can be downloaded from <http://www.eventhelix.com/call-flow/gsm-call-setup.zip>.

This scenario describes the call setup for a GSM originating call. A mobile user calling a land line subscriber is covered here.

Copyright © 2000-2008 EventHelix.com Inc. All Rights Reserved.

Send Button

.. presses the Send button

Begin RR Connection Establishment

Call related information needs to be transported from the mobile phone to the Mobile Switching Center (MSC). This requires the establishment of a Radio Resource (RR) connection to MSC. The first phase of the call setup just sets up this RR connection.

RR CHANNEL REQUEST
RACH

RR connection establishment is triggered by sending the Channel Request message. This message requests the Base Station System (BSS) for allocation for radio resources for the RR connection setup. The mobile now waits for an assignment on the Access Grant Channel (AGCH). At this point the mobile is listening to the AGCH for a reply.

Note: The RR CHANNEL REQUEST is sent on a Random Access Channel (RACH). This is a slotted aloha channel that can be used at random, without any coordination between the mobiles. Any mobile can transmit on this channel whenever it wishes. If two mobiles transmit on the channel at the same time, their messages will be lost in a collision. The mobiles will detect the collision via a timeout and retransmit the message after a random back off.

RR IMMEDIATE ASSIGNMENT
AGCH, Radio_Resource = (TCH, Frequency, Timeslot), Time Correction, Frequency Correction

Apply the time and frequency corrections

Tune to the frequency and timeslot

RR SABM + MM CM SERVICE REQUEST
TCH, SAPI = 0

RR UA
TCH, SAPI = 0

The BSS transmits the radio resource assignment to the Mobile via the AGCH channel. The message also contains the time and frequency corrections. The time corrections allow the mobile to time its transmissions so that they reach the BSS only in the specified slot. The frequency corrections correct for the Doppler shift caused by the mobile's motion.

Adjust the frequency and timing based on the advice from the BSS. This step is required so that transmissions from the mobile reach the base station at the precise time and with the correct frequency.

The mobile detunes from the AGCH and tunes to the specified radio channel.

This is the first message that is sent after tuning to the channel. The Mobile initiates a LAPm connection with the BSC by sending a Set Asynchronous Balanced Mode (SABM) message. The service request message meant for the MSC is also sent in this message.

The BSS replies with Unnumbered Acknowledge (UA) to complete the LAPm setup handshake

LEG: Skip Authentication Procedure

Enable Ciphering

RR CIPHERING MODE COMMAND
mode = CLEAR

Enable ciphering for received and transmitted data

The BSS sends the CIPHERING MODE COMMAND to the mobile. The mobile will be able to receive this message as the transmission from the BSS is still in clear.

As a second step, the Mobile receives the message and enables ciphering in transmit and receive directions. This action will result in all BSS data being received in error. (The BSS is still transmitting data in clear.)

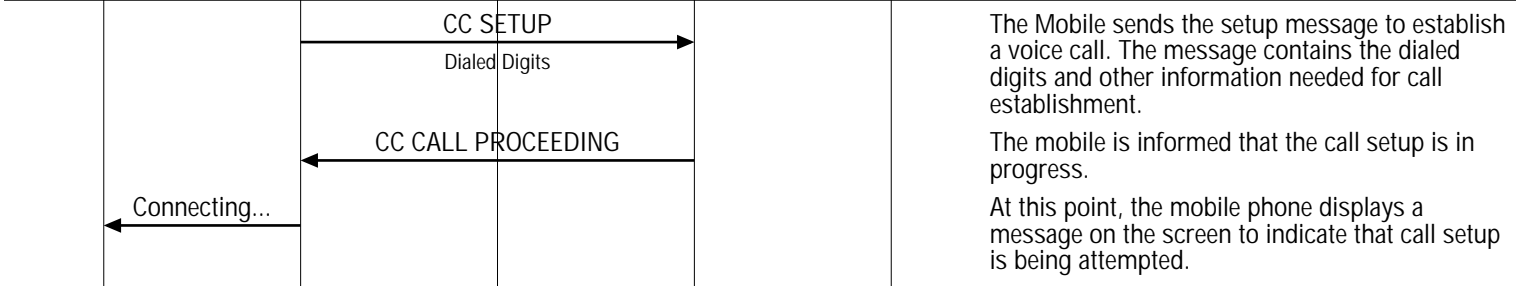
Mobile Interfaces (GSM Originating Call)				
Cell		Mobile Network		Fixed Network
Mobile Station		Base Stations	NSS	PSTN
User	Mobile	BSS	MSC VLR	PSTN
				EventStudio System Designer 4.0
				13-Sep-08 21:38 (Page 2)



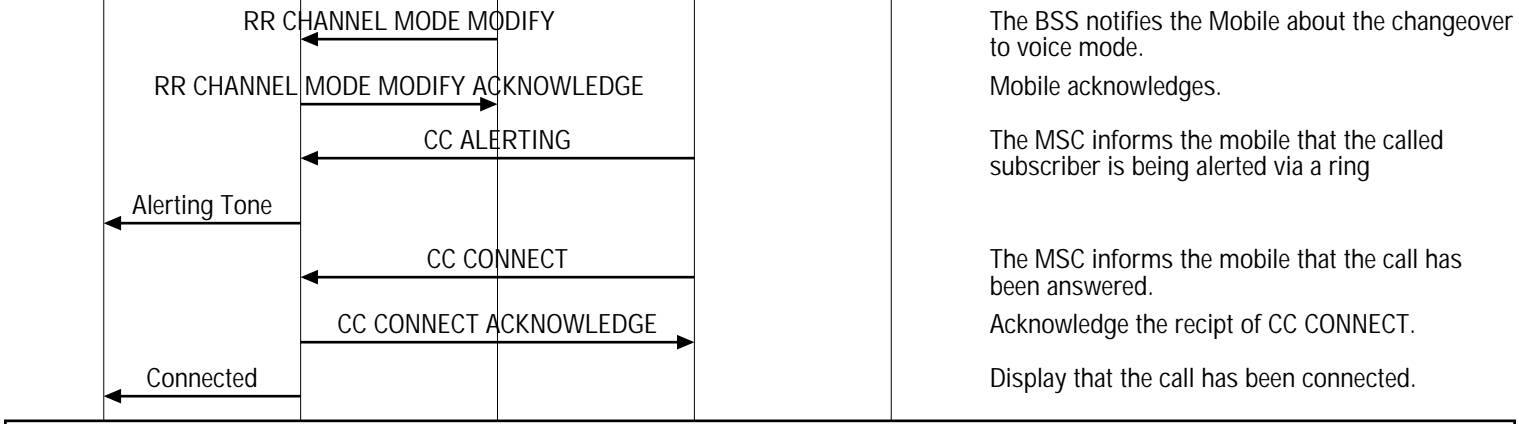
RR Connection Establishment Completed

At this point a connection has been setup between the Mobile and the MSC. From this point onward, the BSS is just acting as a conduit for transporting the signaling messages between the Mobile and the MSC.

Call Setup

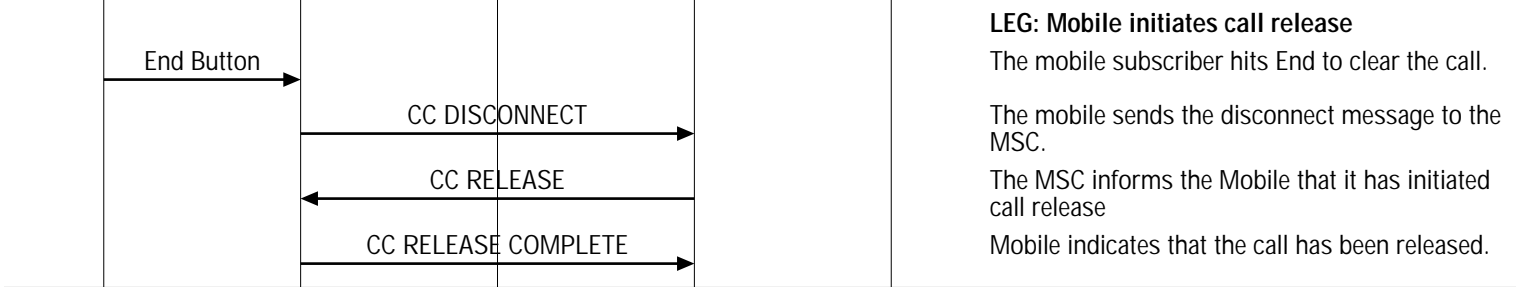


Mode Modify



Conversation

Call Release



RR Connection Release

