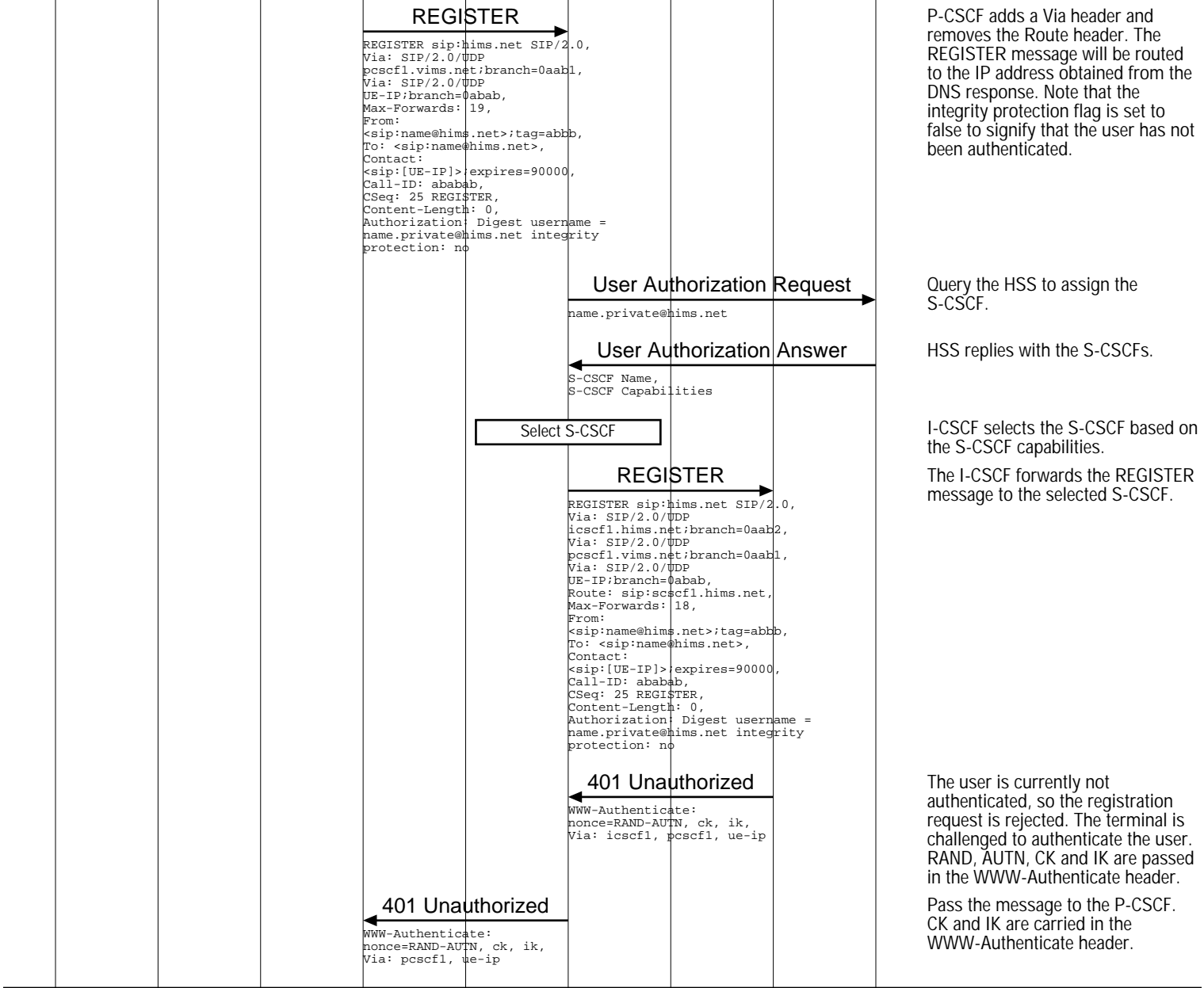


I-CSCF Interfaces (IMS Registration for an Unauthenticated User)								
Visited Network			Internet	Home Network				EventStudio System Designer 4.0
User Equipment	Visited CN		DNS Server	Home IMS			Home CN	
Subscriber	SGSN	GGSN	P-CSCF	DNS Server	I-CSCF		S-CSCF	HSS
24-Nov-07 18:36 (Page 1)								

GPRS Attach

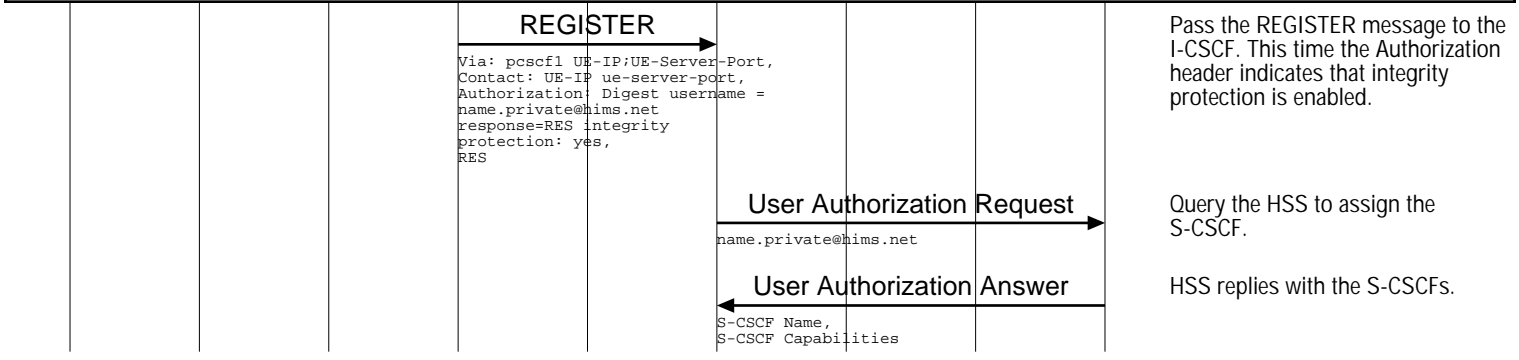
PDP Context Activation

Unauthenticated IMS Registration Attempt



IPSec Security Association Establishment

Authenticated IMS Registration



**I-CSCF Interfaces (IMS Registration for an Unauthenticated User)**

Visited Network			Internet	Home Network				EventStudio System Designer 4.0
User Equipment	Visited CN		Visited IMS	DNS Server	Home IMS		Home CN	
Subscriber	SGSN	GGSN	P-CSCF	DNS Server	I-CSCF		S-CSCF	HSS

24-Nov-07 18:36 (Page 2)

**REGISTER**

Via: icscf1 pscf1  
 UE-IP;UE-Server-Port,  
 Contact: UE-IP ue-server-port,  
 Authorization: Digest username =  
 name.private@hims.net  
 response=RES integrity  
 protection: yes,  
 RES

The SIP REGISTER message is finally delivered to the S-CSCF.

**200 OK**

Via: icscf1, pscf1,  
 UE-IP;UE-Server-Port

The RES and the XRES matched, so the S-CSCF replies with success.

**200 OK**

Via: pscf1, UE-IP;UE-Server-Port

The success is relayed back to the P-CSCF.