

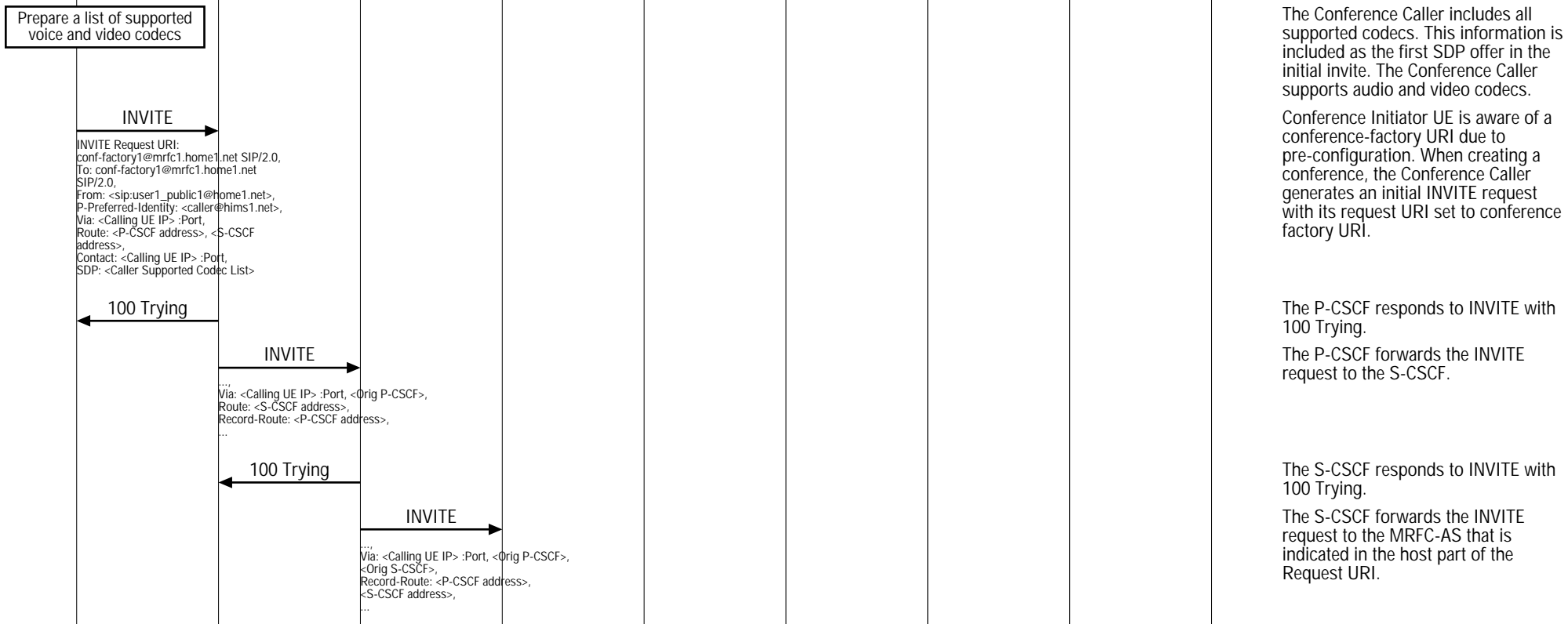
IMS Conference (IMS Conference Call)								
Calling UE	IMS Network						Called UE	EventStudio System Designer 4.0
Caller User Equipment	IMS 1		IMS 1 MRF		IMS 2		Called User Equipment	
Conference Initiator	Initiating P-CSCF	Initiating S-CSCF	MRFC-AS	MRFP	Participating I-CSCF	Participating S-CSCF	Participating P-CSCF	Conference Participant

This sequence diagram was generated with EventStudio System Designer 4.0 (<http://www.EventHelix.com/EventStudio>). Copyright © 2008 EventHelix.com Inc. All Rights Reserved. The EventStudio source files for this document can be downloaded from <http://www.eventhelix.com/call-flow/ims-conference.zip>.

This sequence diagram shows an IMS user creating a conference by using a conference-factory URI. The conference is created at a MRFC-AS of the users home network. The steps involved in the conference scenario covered here are:

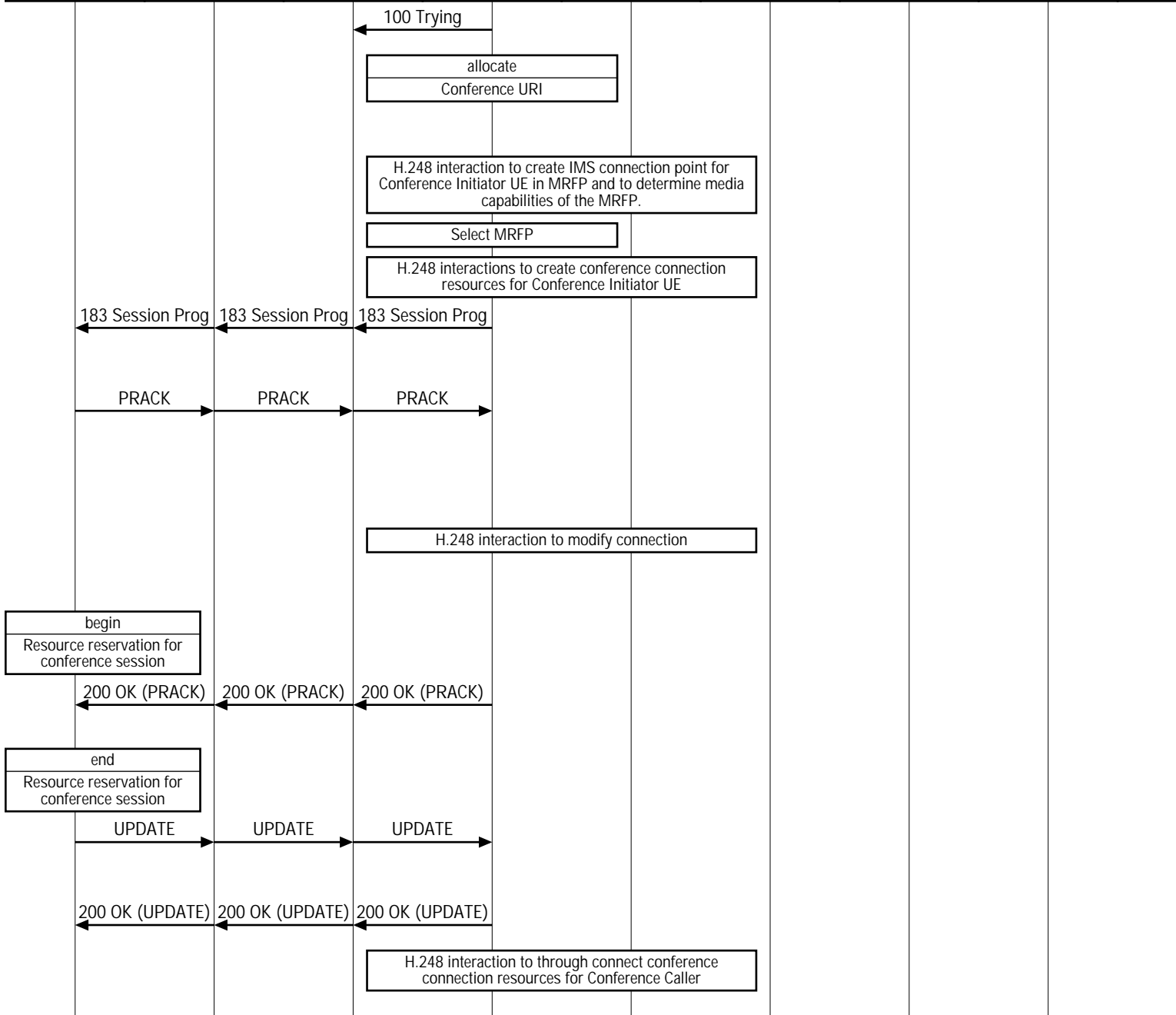
- (1) The conference initiator UE uses the conference factory URI to initiate a conference with the MRFC-AS (Multimedia Resource Function Control/Application Server).
- (2) The MRFC-AS assigns a conference URI to the conference and configures the MRFP (Multimedia Resource Function Processor).
- (3) The conference call is setup and the RTP data begins flowing between the conference initiating UE and the MRFP.
- (4) The conference initiator then uses the refer procedure to add more users to the conference. The new users establish a call to the conference URI passed in the refer message.
- (5) When the conference is in progress, RTP media streams are being mixed and propagated to all the participants.
- (6) The conference user drops out of the conference. All users are notified for this exit from the conference.

Initiating an IMS conference using the Conference Factory URI



IMS Conference (IMS Conference Call)								
Calling UE	IMS Network						Called UE	EventStudio System Designer 4.0
Caller User Equipment	IMS 1		IMS 1 MRF		IMS 2		Called User Equipment	
Conference Initiator	Initiating P-CSCF	Initiating S-CSCF	MRFC-AS	MRFP	Participating I-CSCF	Participating S-CSCF	Participating P-CSCF	Conference Participant

18-May-08 10:40 (Page 2)



The MRF responds to INVITE with 100 Trying.
The MRFC-AS allocates a conference URI, based on local information and information gained from the conference-factory URI in the Request URI field of INVITE message.

The media stream capabilities of the MRFP are returned along the signalling path, in a 183 (Session Progress) provisional response.

The Conference Initiator UE determines which media flows should be used for this session, and which codecs should be used for each of those media flows. If there is any change, Conference Caller sends a new codec request in PRACK.

MRFC-AS initiates H.248 interaction to modify the connection. It instructs the MRFP to reserve multimedia resources for the negotiated codecs.

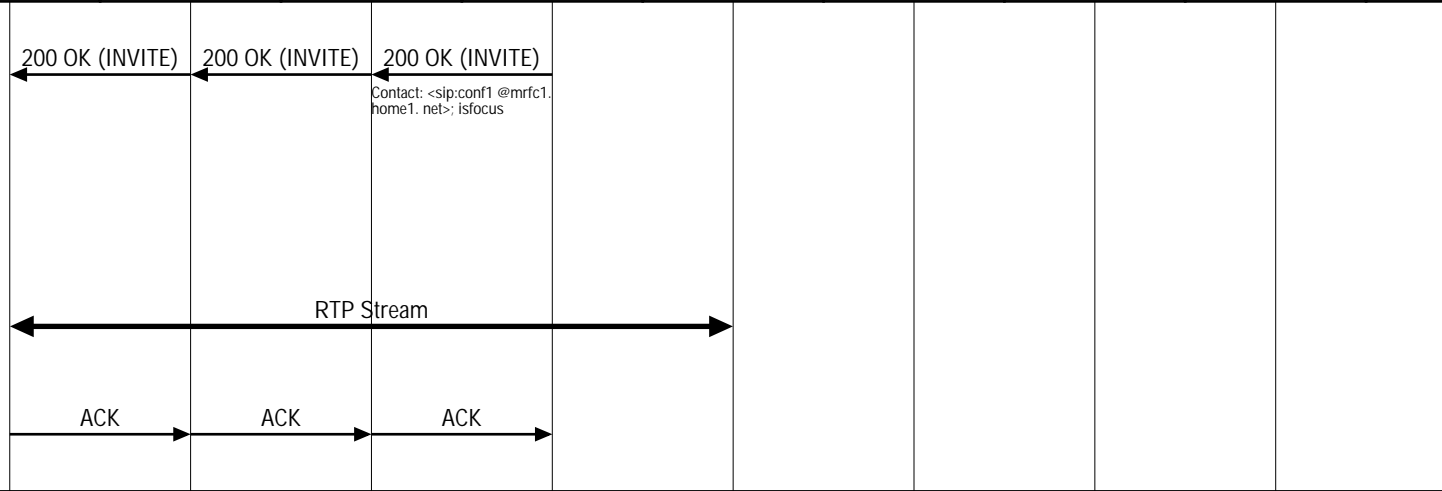
The MRFC-AS acknowledges the PRACK request with a 200 (OK) response.

When the resource reservation is completed, the Conference Initiator UE sends the UPDATE request towards the MRFC-AS

The MRFC-AS acknowledges the UPDATE with a 200 (OK) response.

MRFC initiates a H.248 interaction to connect through the multimedia processing resources for Conference

IMS Conference (IMS Conference Call)								
Calling UE	IMS Network						Called UE	EventStudio System Designer 4.0
Caller User Equipment	IMS 1		IMS 1 MRF		IMS 2		Called User Equipment	
Conference Initiator	Initiating P-CSCF	Initiating S-CSCF	MRFC-AS	MRFP	Participating I-CSCF	Participating S-CSCF	Participating P-CSCF	Conference Participant
								18-May-08 10:40 (Page 3)



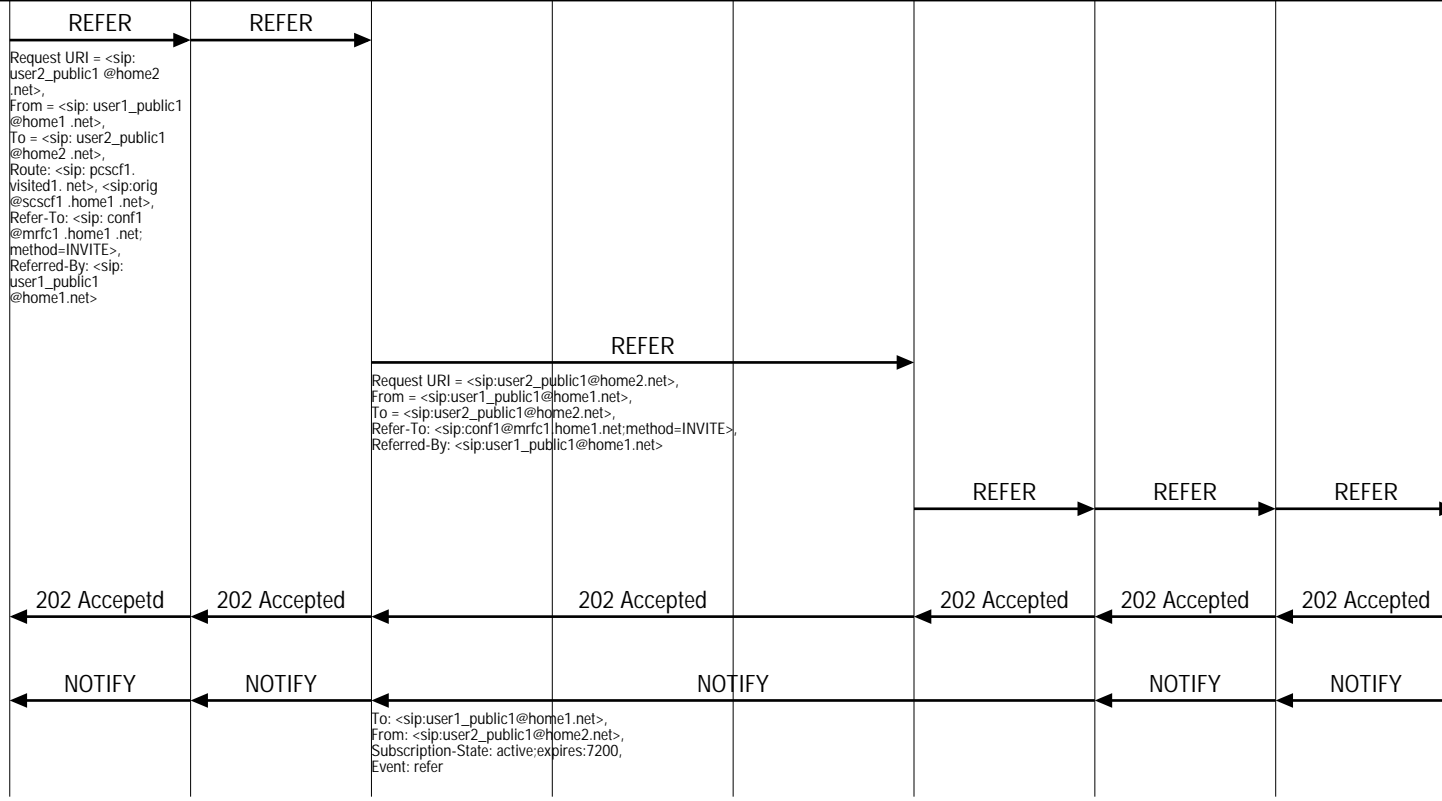
Caller in MRFP.

The MRFC-AS sends "200 OK" as a final response to INVITE request. MRFC creates a focus for the newly created conference, assigns it conference URI and returns it in Contact header. On receiving 200 (OK) with isfocus parameter, the Conference initiator stores the Contact header content as the conference URI.

The Conference Initiator starts the media flow for this session. The RTP data stream is started towards the MRFP.

The conference initiator responds to the "200 OK" with an ACK towards MRFC-AS.

User inviting another user to a conference by sending a REFER request



Conference Caller creates a conference and then sends REFER message with Refer-To containing the conference URI as learned during the conference establishment. Additionally the "method" uri parameter indicates that the other user is requested to send an INVITE request to this conference URI.

The originating S-CSCF performs an analysis of the destination address, determines the terminating I-CSCF and forwards the REFER message to it.

The terminating I-CSCF performs a location query to the HSS to find out the terminating S-CSCF and forwards the REFER request to that S-CSCF.

The Called Conference Participant accepts the REFER request by sending a 202 (Accepted) response.

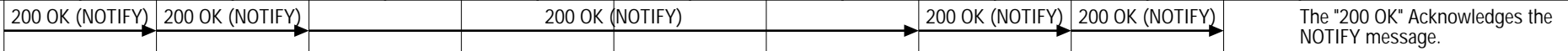
The NOTIFY message is sent to inform that the REFER message is being processed.

Request URI = < sip: user2_public1 @home2.net>
 From = < sip: user1_public1 @home1.net>
 To = < sip: user2_public1 @home2.net>
 Route = < sip: pscf1.visited1.net>, < sip: orig@scscf1.home1.net>
 Refer-To: < sip: conf1@mrfc1.home1.net; method=INVITE>
 Referred-By: < sip: user1_public1 @home1.net>

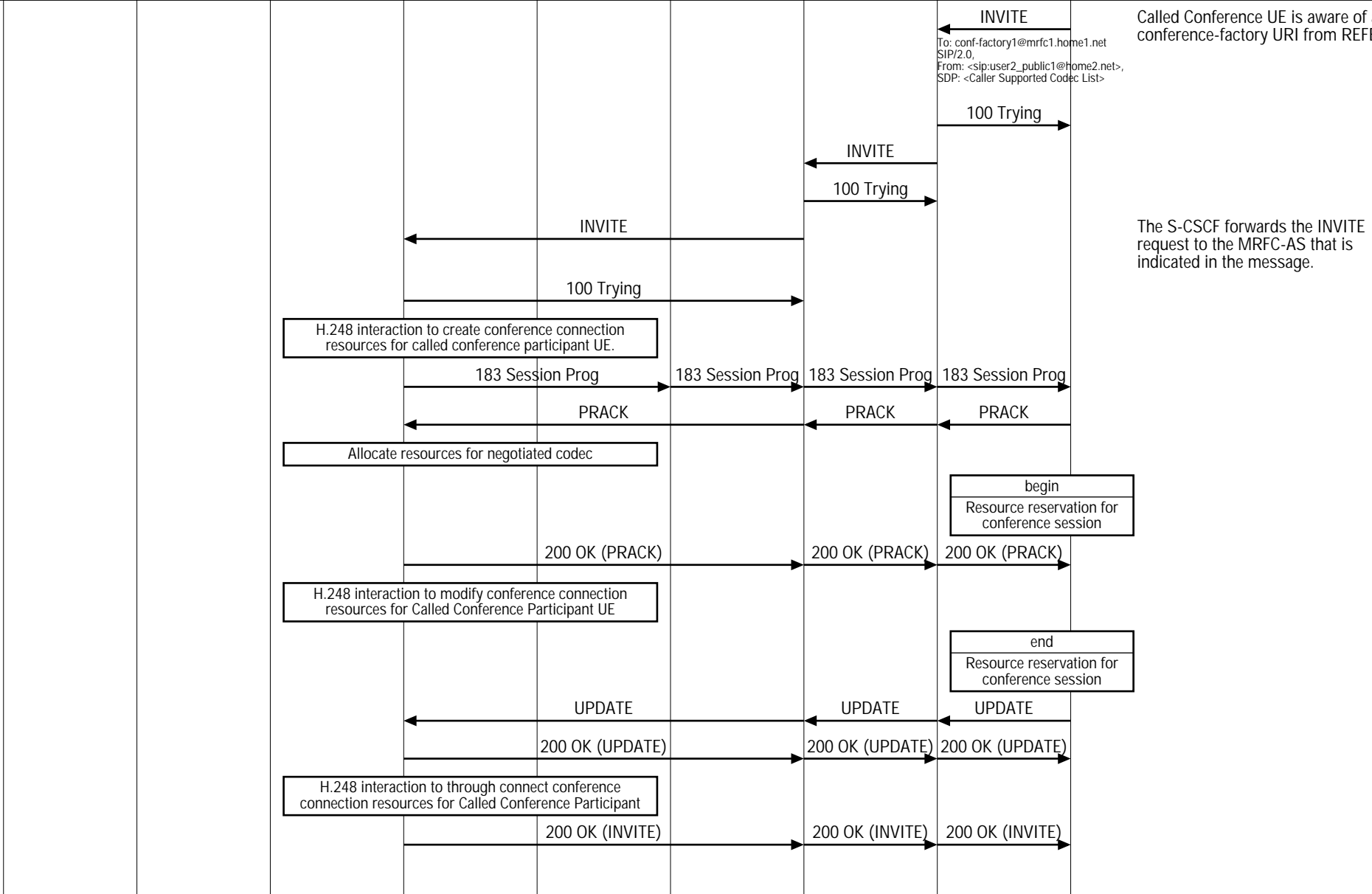
Request URI = < sip: user2_public1@home2.net>
 From = < sip: user1_public1@home1.net>
 To = < sip: user2_public1@home2.net>
 Refer-To: < sip: conf1@mrfc1.home1.net; method=INVITE>
 Referred-By: < sip: user1_public1@home1.net>

To: < sip: user1_public1@home1.net>
 From: < sip: user2_public1@home2.net>
 Subscription-State: active; expires: 7200;
 Event: refer

IMS Conference (IMS Conference Call)									
Calling UE	IMS Network							Called UE	EventStudio System Designer 4.0
Caller User Equipment	IMS 1		IMS 1 MRF		IMS 2			Called User Equipment	
Conference Initiator	Initiating P-CSCF	Initiating S-CSCF	MRFC-AS	MRFP	Participating I-CSCF	Participating S-CSCF	Participating P-CSCF	Conference Participant	18-May-08 10:40 (Page 4)



Called Conference Participant enters Conference



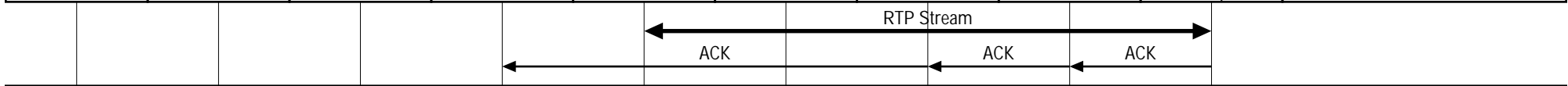
To: conf-factory1@mrfc1.home1.net
 SIP/2.0.
 From: <sip:user2_public1@home2.net>,
 SDP: <Caller Supported Codec List>

Called Conference UE is aware of a conference-factory URI from REFER.

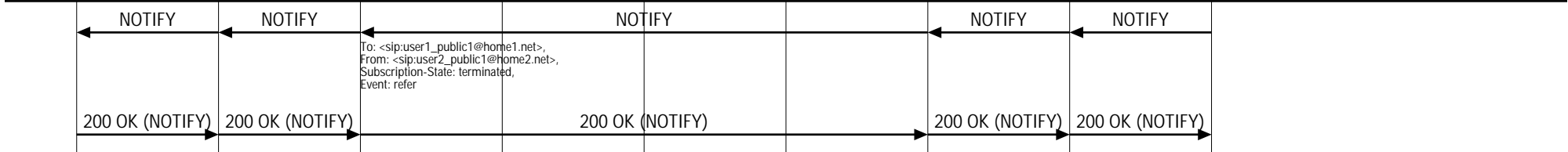
The S-CSCF forwards the INVITE request to the MRFC-AS that is indicated in the message.

IMS Conference (IMS Conference Call)								
Calling UE	IMS Network						Called UE	EventStudio System Designer 4.0
Caller User Equipment	IMS 1		IMS 1 MRF		IMS 2		Called User Equipment	
Conference Initiator	Initiating P-CSCF	Initiating S-CSCF	MRFC-AS	MRFP	Participating I-CSCF	Participating S-CSCF	Participating P-CSCF	Conference Participant

18-May-08 10:40 (Page 5)

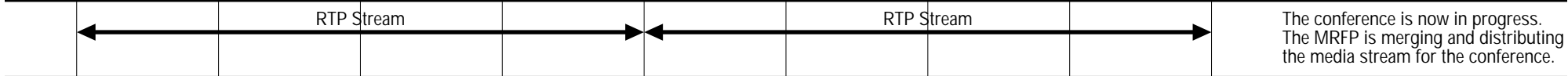


Notify Conference Initiator that the user has successfully entered the conference

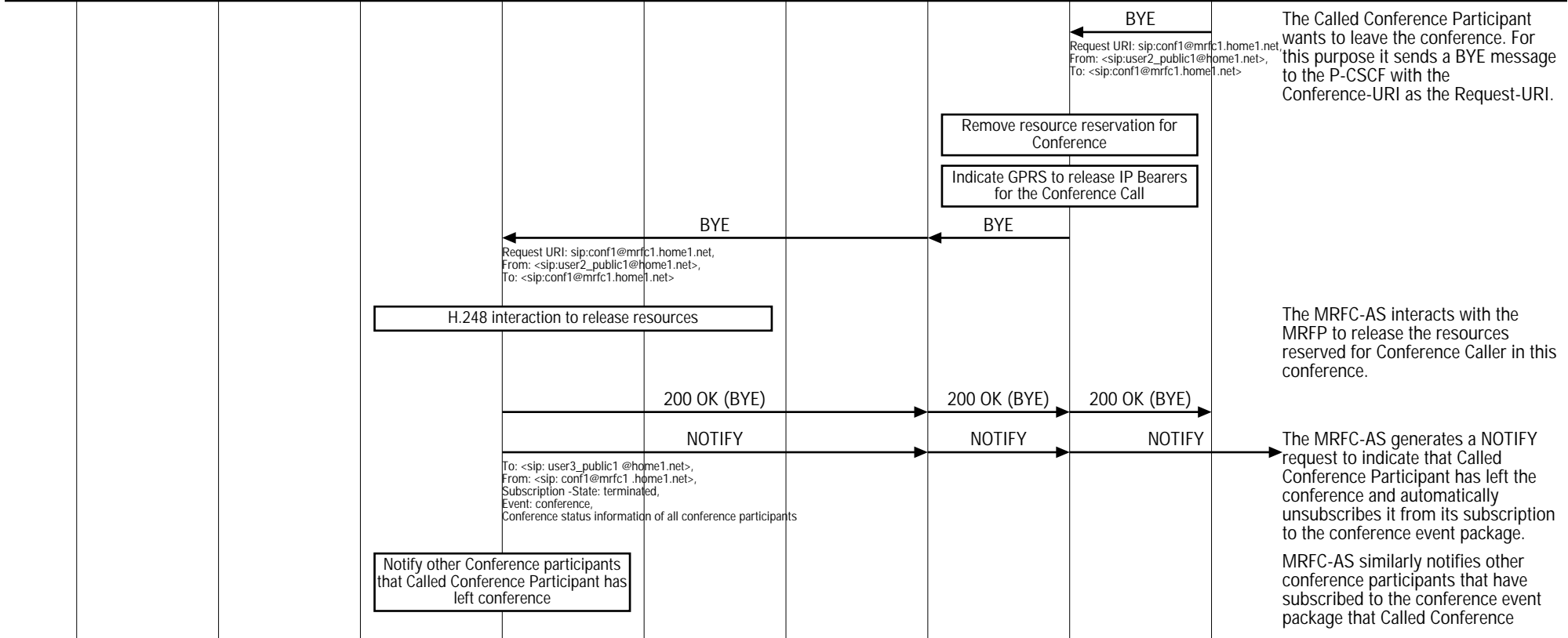


To: <sip:user1_public1@home1.net>
 From: <sip:user2_public1@home2.net>
 Subscription-State: terminated,
 Event: refer

Conference in progress



Conference Caller leaving the Conference



BYE
 Request URI: sip:conf1@mrfc1.home1.net,
 From: <sip:user2_public1@home1.net>,
 To: <sip:conf1@mrfc1.home1.net>

The Called Conference Participant wants to leave the conference. For this purpose it sends a BYE message to the P-CSCF with the Conference-URI as the Request-URI.

Remove resource reservation for Conference
 Indicate GPRS to release IP Bearers for the Conference Call

BYE
 Request URI: sip:conf1@mrfc1.home1.net,
 From: <sip:user2_public1@home1.net>,
 To: <sip:conf1@mrfc1.home1.net>

H.248 interaction to release resources

The MRFC-AS interacts with the MRFP to release the resources reserved for Conference Caller in this conference.

Notify other Conference participants that Called Conference Participant has left conference

The MRFC-AS generates a NOTIFY request to indicate that Called Conference Participant has left the conference and automatically unsubscribes it from its subscription to the conference event package.

MRFC-AS similarly notifies other conference participants that have subscribed to the conference event package that Called Conference Participant has left the conference.

IMS Conference (IMS Conference Call)									
Calling UE	IMS Network							Called UE	EventStudio System Designer 4.0
Caller User Equipment	IMS 1		IMS 1 MRF		IMS 2			Called User Equipment	
Conference Initiator	Initiating P-CSCF	Initiating S-CSCF	MRFC-AS	MRFP	Participating I-CSCF	Participating S-CSCF	Participating P-CSCF	Conference Participant	18-May-08 10:40 (Page 6)

