

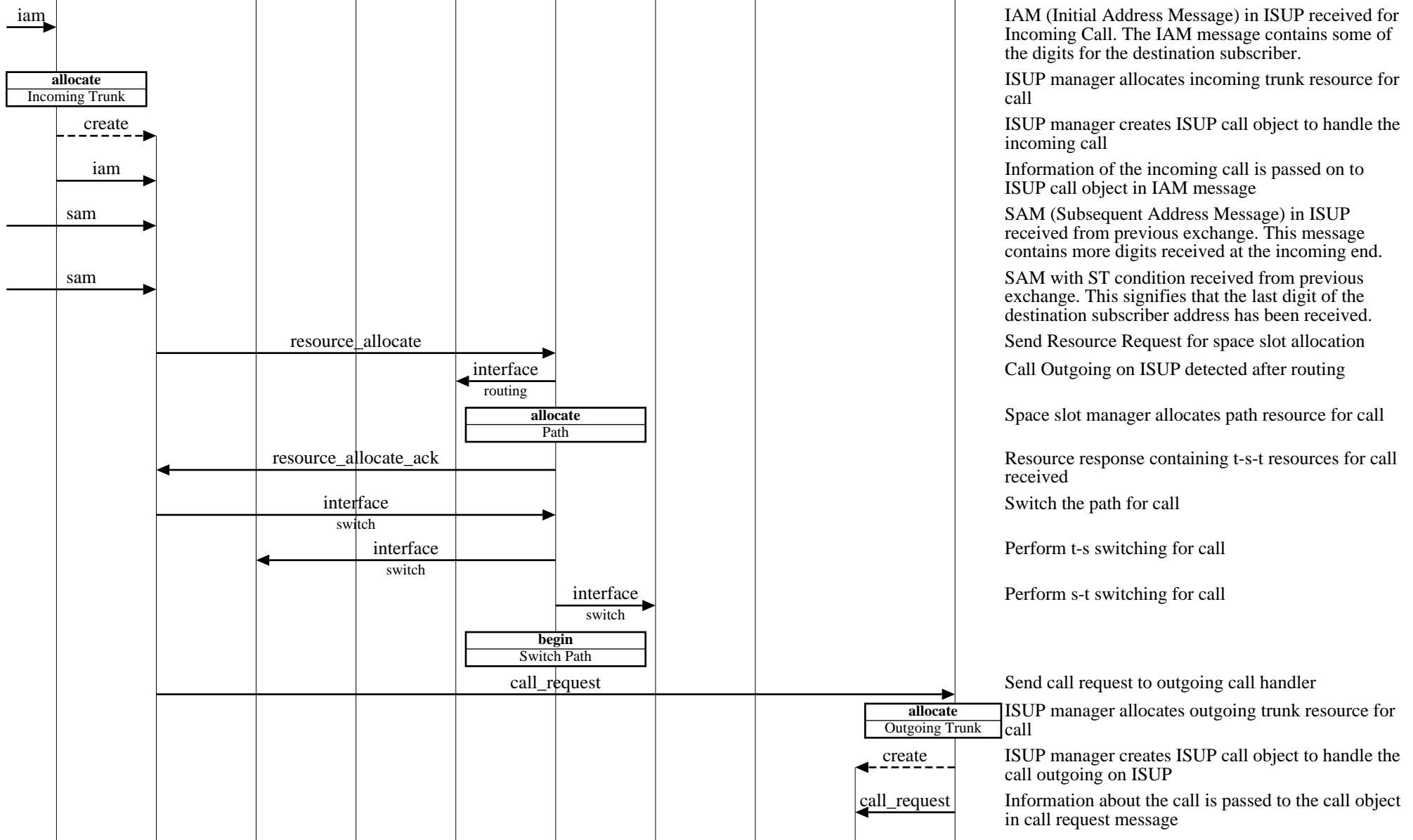
Incoming ISUP and Outgoing ISUP Transit Call (ISUP to ISUP Call - Failure Scenario)

| | | | | | | | | | | | | |
|------------------|------------|---------|-----------|-------------------|--------|---------|---------------|------------|-----------|--------------------------------|--------------------------|--|
| switching system | | | | | | | | | | EventHelix.com/EventStudio 1.5 | | |
| call handler1 | | | | central processor | | | call handler2 | | | | 13-Jun-02 22:07 (Page 1) | |
| isup mgr1 | isup call1 | ts mgr1 | tone mgr1 | rout mgr | ss mgr | ts mgr2 | tone mgr2 | isup call2 | isup mgr2 | | | |

Copyright (c) 2002 EventHelix.com. All Rights Reserved.

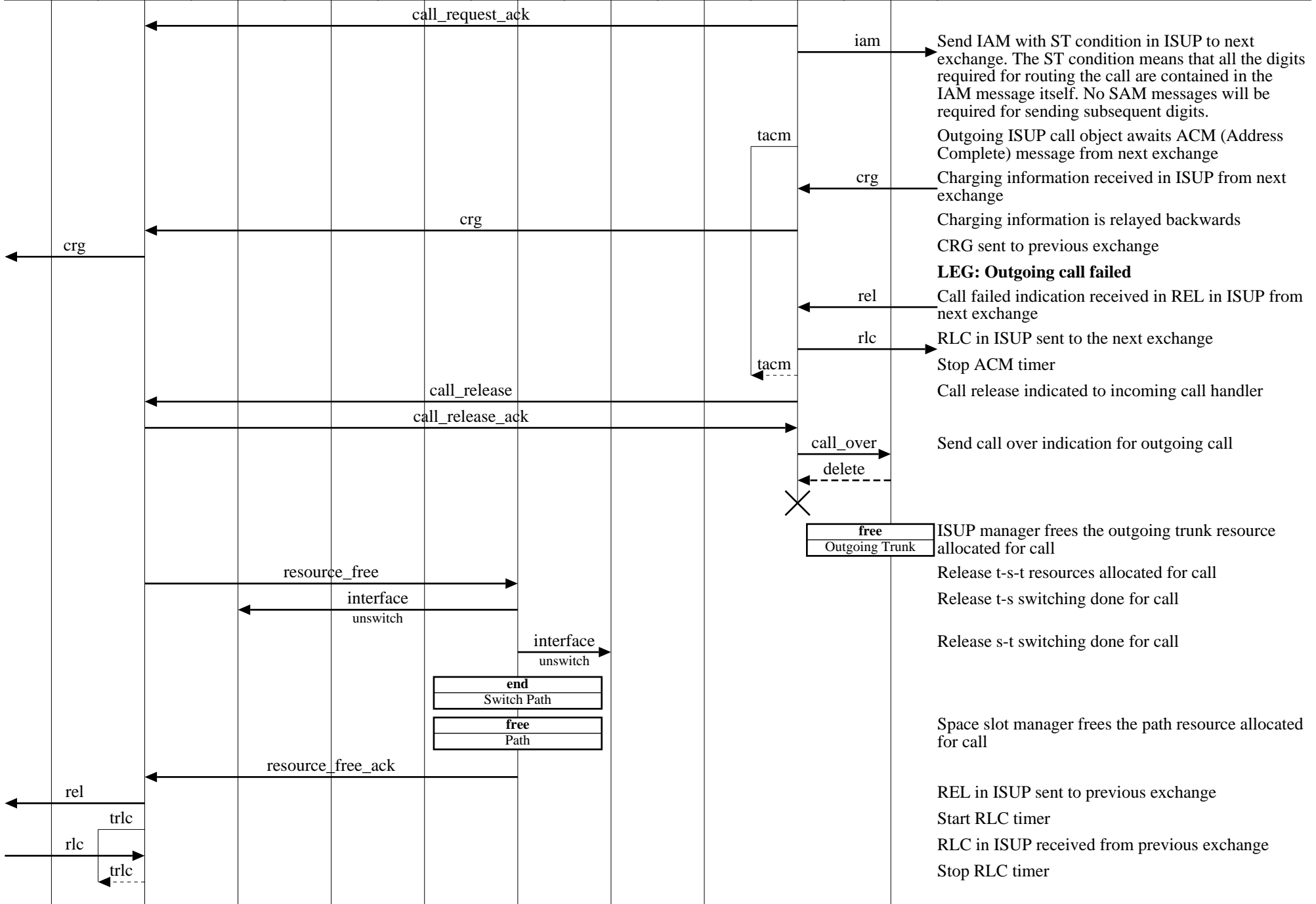
This Message Sequence Chart describes an ISUP (ISDN User Part) call. The call is incoming ISUP and after routing it is sent out on an ISUP trunk

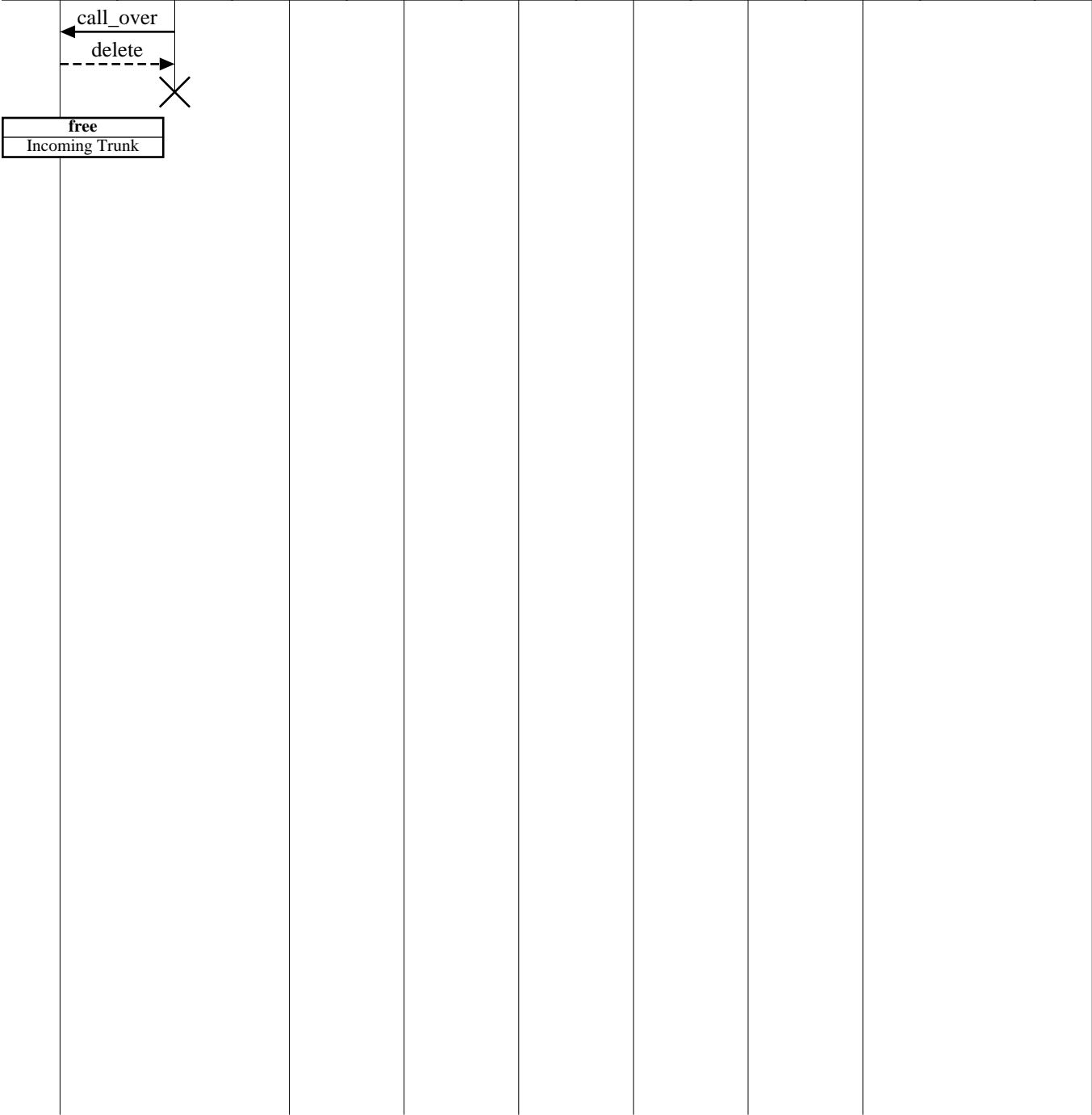
Call incoming on ISUP



Incoming ISUP and Outgoing ISUP Transit Call (ISUP to ISUP Call - Failure Scenario)

| | | | | | | | | | | | |
|------------------|------------|---------|-----------|-------------------|--------|---------|---------------|------------|-----------|--------------------------------|--|
| switching system | | | | | | | | | | EventHelix.com/EventStudio 1.5 | |
| call handler1 | | | | central processor | | | call handler2 | | | 13-Jun-02 22:07 (Page 2) | |
| isup mgr1 | isup call1 | ts mgr1 | tone mgr1 | rout mgr | ss mgr | ts mgr2 | tone mgr2 | isup call2 | isup mgr2 | | |





Send call over indication for incoming call

ISUP manager frees the incoming trunk resource allocated for call