

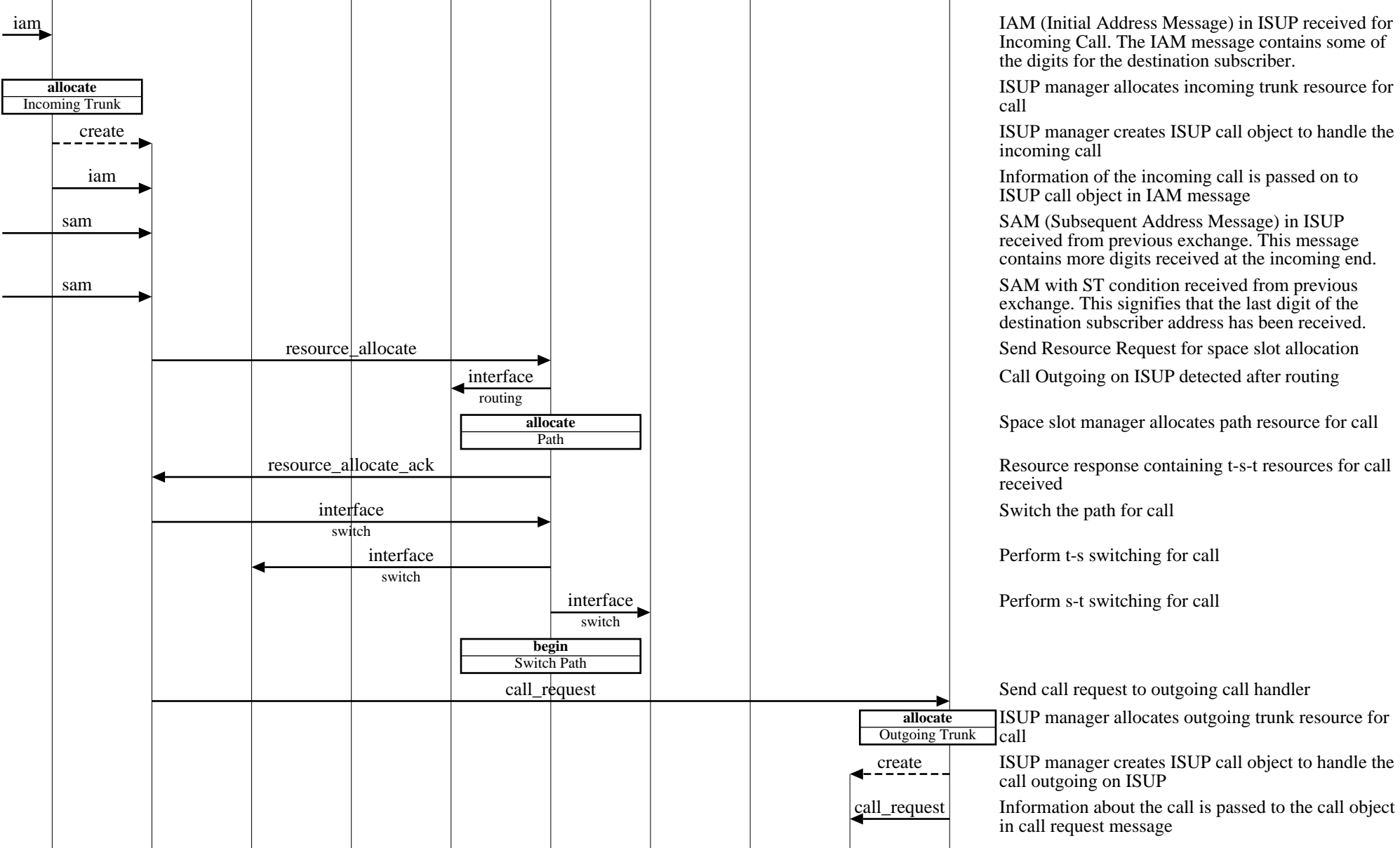
**Incoming ISUP and Outgoing ISUP Transit Call (ISUP to ISUP Successful Call - Calling Subscriber Releases First)**

switching system										EventHelix.com/EventStudio 1.5		
call handler1				central processor			call handler2				12-Jun-02 22:58 (Page 1)	
isup mgr1	isup call1	ts mgr1	tone mgr1	rout mgr	ss mgr	ts mgr2	tone mgr2	isup call2	isup mgr2			

Copyright (c) 2002 EventHelix.com. All Rights Reserved.

This Message Sequence Chart describes an ISUP (ISDN User Part) call. The call is incoming ISUP and after routing it is sent out on an ISUP trunk

Call incoming on ISUP



IAM (Initial Address Message) in ISUP received for Incoming Call. The IAM message contains some of the digits for the destination subscriber.

ISUP manager allocates incoming trunk resource for call

ISUP manager creates ISUP call object to handle the incoming call

Information of the incoming call is passed on to ISUP call object in IAM message

SAM (Subsequent Address Message) in ISUP received from previous exchange. This message contains more digits received at the incoming end.

SAM with ST condition received from previous exchange. This signifies that the last digit of the destination subscriber address has been received.

Send Resource Request for space slot allocation

Call Outgoing on ISUP detected after routing

Space slot manager allocates path resource for call

Resource response containing t-s-t resources for call received

Switch the path for call

Perform t-s switching for call

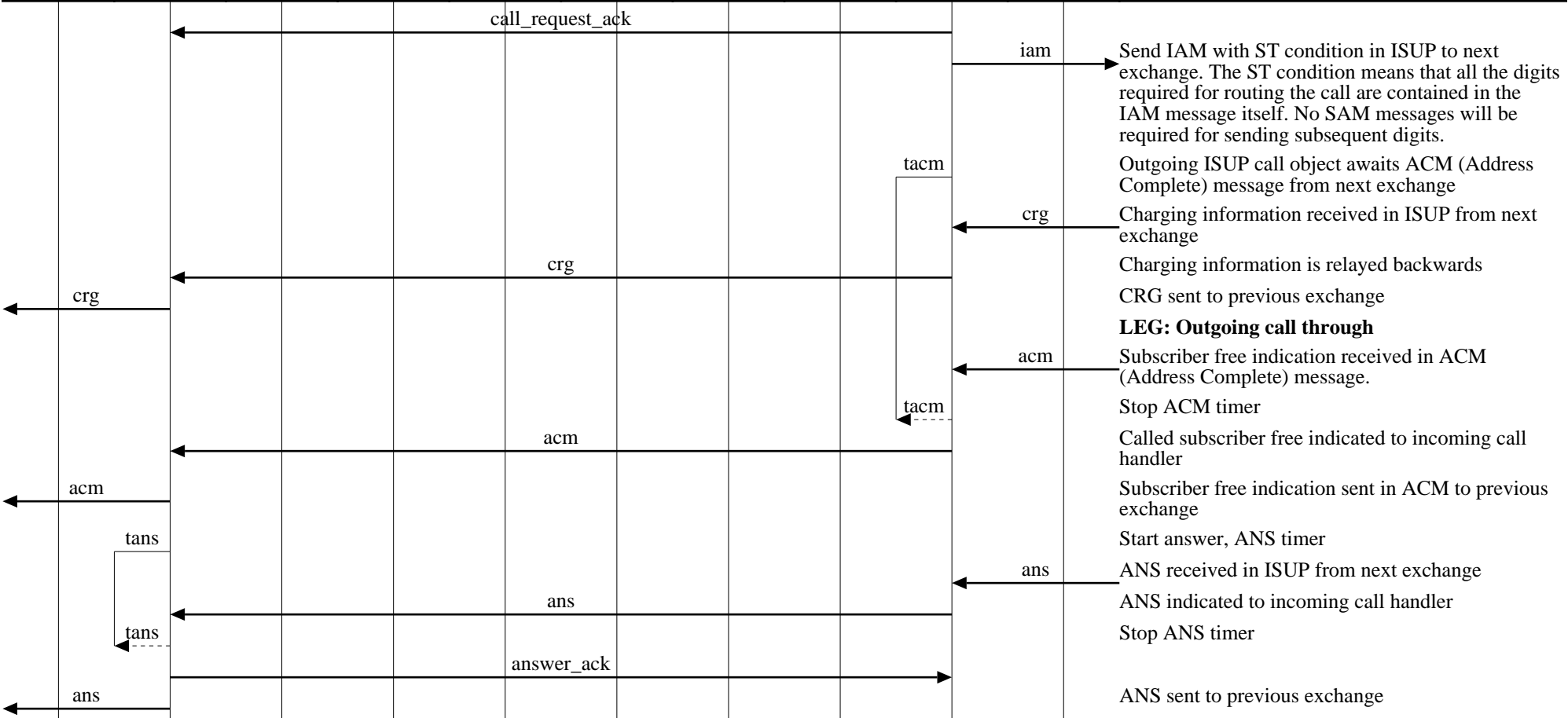
Perform s-t switching for call

Send call request to outgoing call handler

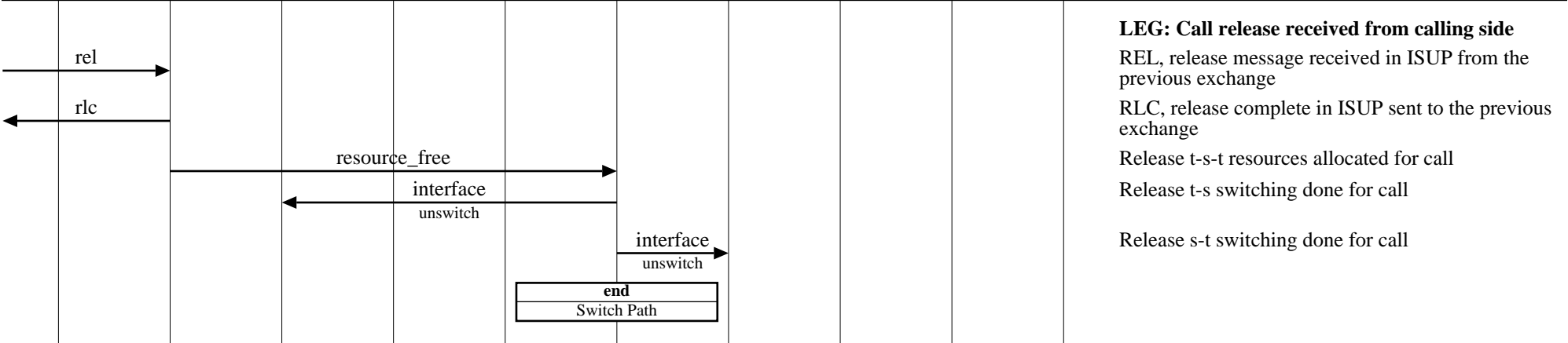
ISUP manager allocates outgoing trunk resource for call

ISUP manager creates ISUP call object to handle the call outgoing on ISUP

Information about the call is passed to the call object in call request message



Call is in CONVERSATION



**Incoming ISUP and Outgoing ISUP Transit Call (ISUP to ISUP Successful Call - Calling Subscriber Releases First)**

switching system										EventHelix.com/EventStudio 1.5		
call handler1				central processor			call handler2				12-Jun-02 22:58 (Page 3)	
isup mgr1	isup call1	ts mgr1	tone mgr1	rout mgr	ss mgr	ts mgr2	tone mgr2	isup call2	isup mgr2			

