

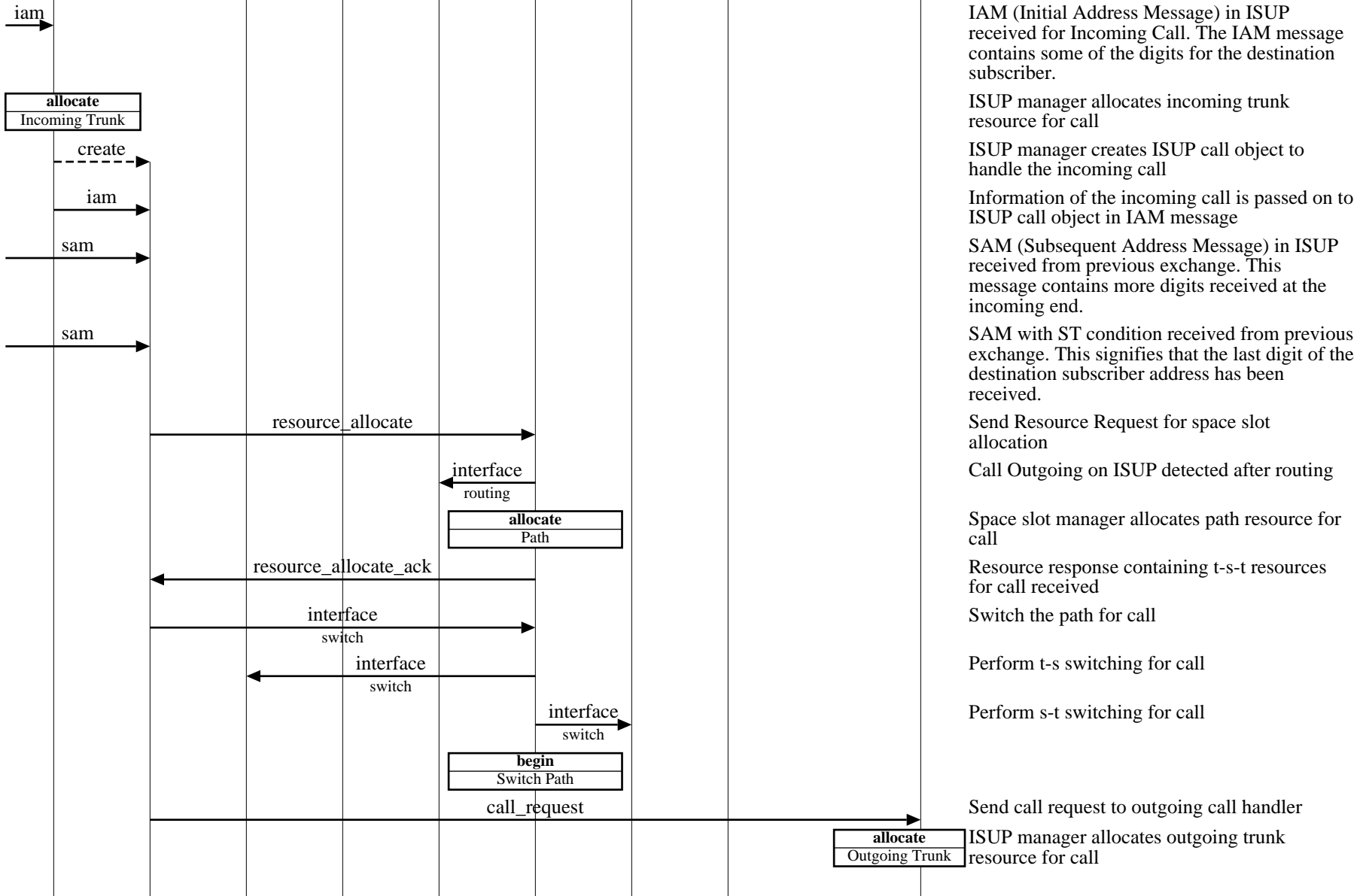
Incoming ISUP and Outgoing ISUP Transit Call (ISUP to ISUP Successful Call)

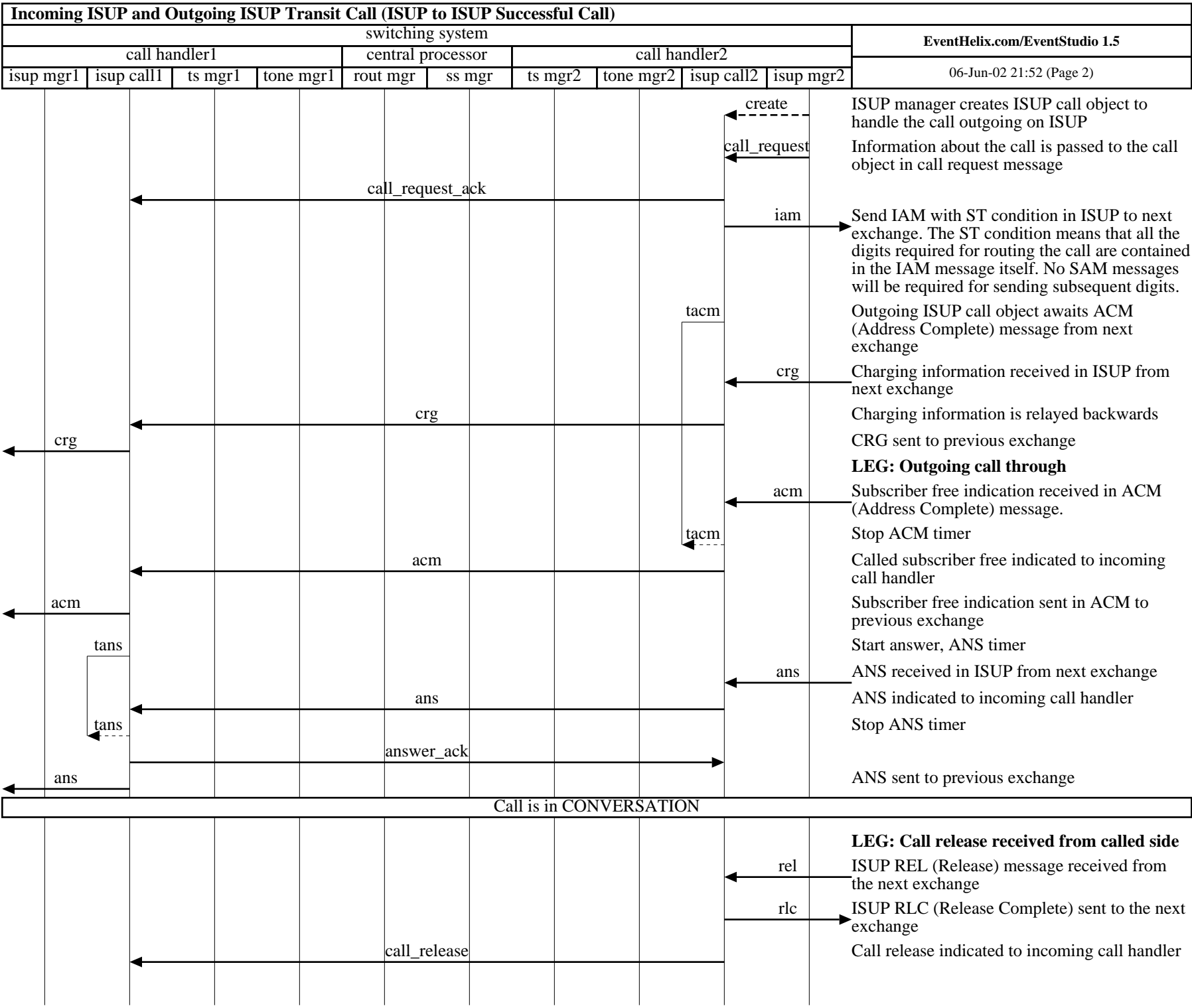
switching system										EventHelix.com/EventStudio 1.5	
call handler1				central processor			call handler2			06-Jun-02 21:52 (Page 1)	
isup mgr1	isup call1	ts mgr1	tone mgr1	rout mgr	ss mgr	ts mgr2	tone mgr2	isup call2	isup mgr2		

Copyright (c) 2002 EventHelix.com. All Rights Reserved.

This Message Sequence Chart describes an ISUP (ISDN User Part) call. The call is incoming ISUP and after routing it is sent out on an ISUP trunk

Call incoming on ISUP





Incoming ISUP and Outgoing ISUP Transit Call (ISUP to ISUP Successful Call)

switching system										EventHelix.com/EventStudio 1.5	
call handler1				central processor			call handler2			06-Jun-02 21:52 (Page 3)	
isup mgr1	isup call1	ts mgr1	tone mgr1	rout mgr	ss mgr	ts mgr2	tone mgr2	isup call2	isup mgr2		

