

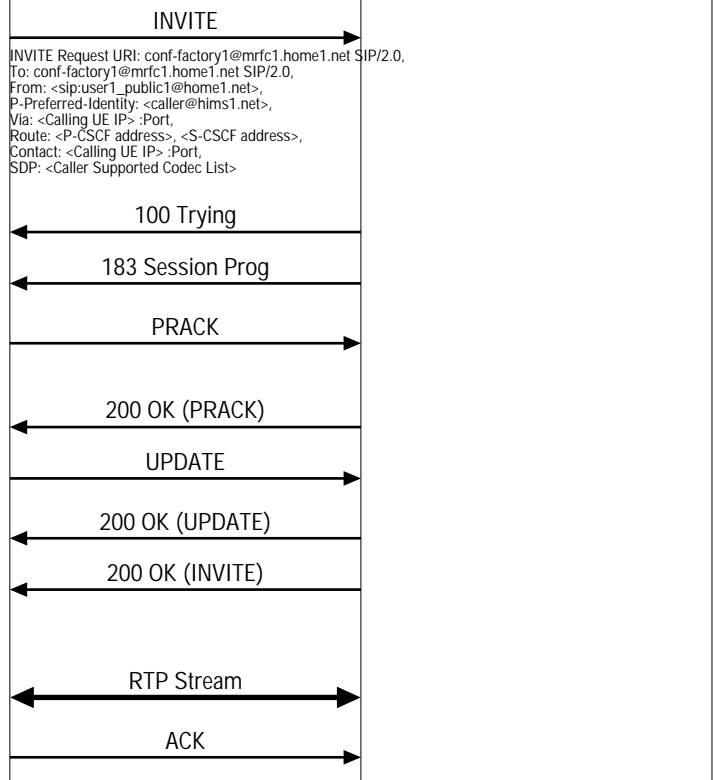
Module Interfaces (IMS Conference Call)			
Calling UE	IMS Network	Called UE	EventStudio System Designer 4.0

This sequence diagram was generated with EventStudio System Designer 4.0 (<http://www.EventHelix.com/EventStudio>). Copyright © 2008 EventHelix.com Inc. All Rights Reserved. The EventStudio source files for this document can be downloaded from <http://www.eventhelix.com/call-flow/ims-conference.zip>.

This sequence diagram shows an IMS user creating a conference by using a conference-factory URI. The conference is created at a MRFC-AS of the users home network. The steps involved in the conference scenario covered here are:

- (1) The conference initiator UE uses the conference factory URI to initiate a conference with the MRFC-AS (Multimedia Resource Function Control/Application Server).
- (2) The MRFC-AS assigns a conference URI to the conference and configures the MRFP (Multimedia Resource Function Processor).
- (3) The conference call is setup and the RTP data begins flowing between the conference initiating UE and the MRFP.
- (4) The conference initiator then uses the refer procedure to add more users to the conference. The new users establish a call to the conference URI passed in the refer message.
- (5) When the conference is in progress, RTP media streams are being mixed and propagated to all the participants.
- (6) The conference user drops out of the conference. All users are notified for this exit from the conference.

Initiating an IMS conference using the Conference Factory URI



Conference Initiator UE is aware of a conference-factory URI due to pre-configuration. When creating a conference, the Conference Caller generates an initial INVITE request with its request URI set to conference factory URI.

The P-CSCF responds to INVITE with 100 Trying.

The media stream capabilities of the MRFP are returned along the signalling path, in a 183 (Session Progress) provisional response.

The Conference Initiator UE determines which media flows should be used for this session, and which codecs should be used for each of those media flows. If there is any change, Conference Caller sends a new codec request in PRACK.

The MRFC-AS acknowledges the PRACK request with a 200 (OK) response.

When the resource reservation is completed, the Conference Initiator UE sends the UPDATE request towards the MRFC-AS

The MRFC-AS acknowledges the UPDATE with a 200 (OK) response.

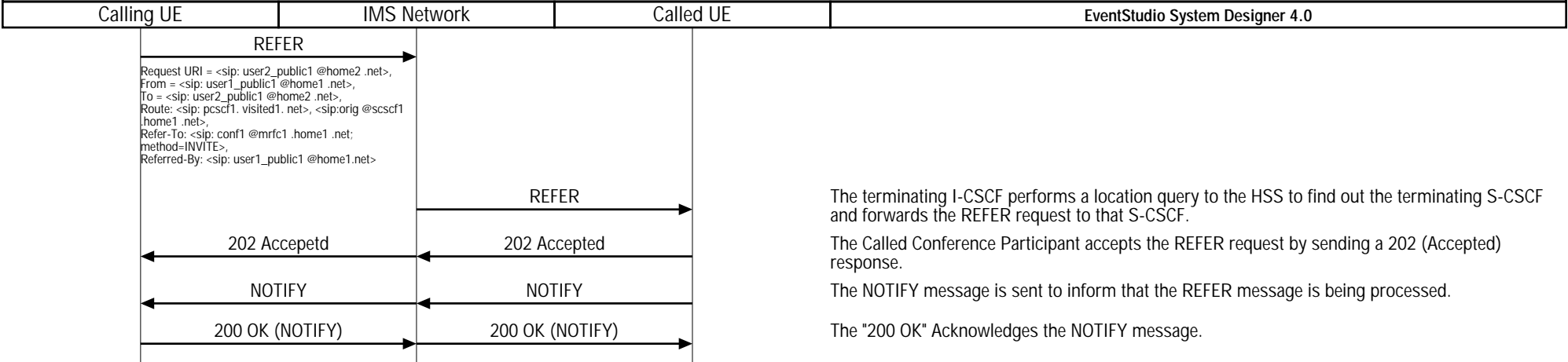
The MRFC-AS sends "200 OK" as a final response to INVITE request. MRFC creates a focus for the newly created conference, assigns it conference URI and returns it in Contact header. On receiving 200 (OK) with isfocus parameter, the Conference initiator stores the Contact header content as the conference URI.

The Conference Initiator starts the media flow for this session. The RTP data stream is started towards the MRFP.

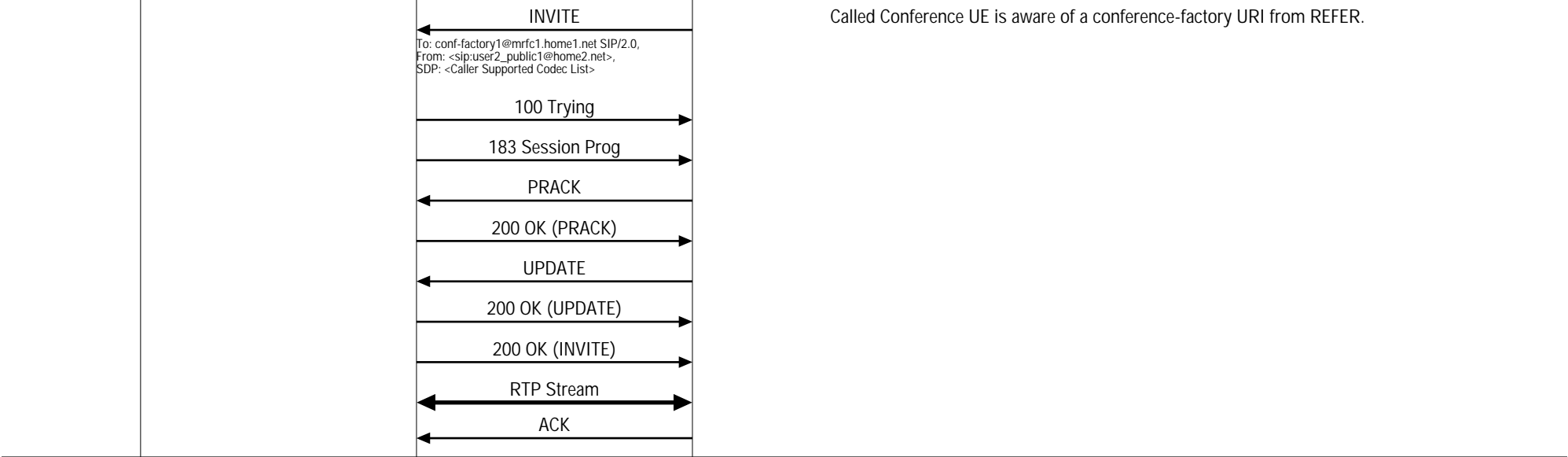
The conference initiator responds to the "200 OK" with an ACK towards MRFC-AS.

User inviting another user to a conference by sending a REFER request

Module Interfaces (IMS Conference Call)



Called Conference Participant enters Conference



Notify Conference Initiator that the user has successfully entered the conference



Conference in progress



Conference Caller leaving the Conference



Module Interfaces (IMS Conference Call)

Calling UE IMS Network Called UE EventStudio System Designer 4.0

